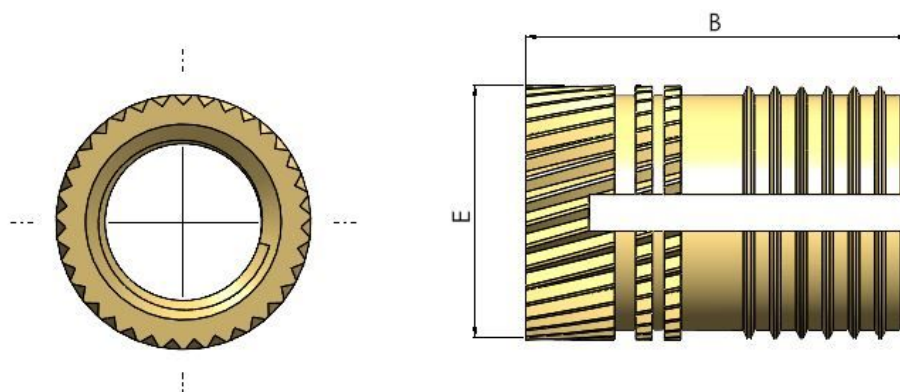




Series: 20110 Type: PL



## Press Fit Expansion

Part No.	Thread	E	B	Hole +0.1	Min Wall
PL020H040	M2	3.7	4.0	3.2	1.6
PL025H058	M2.5	4.5	5.8	4.0	2.0
PL030H058	M3	4.5	5.8	4.0	2.0
PL035H072	M3.5	5.3	7.2	4.8	2.4
PL040H082	M4	6.2	8.2	5.6	2.8
PL050H095	M5	6.9	9.5	6.4	3.2
PL060H127	M6	8.5	12.7	8.0	4.0
PL080H127	M8	10.1	12.7	9.6	4.8

The PL range of inserts provide a thread locking feature as the screw expands the insert although this does increase the driving torque of the screw. The knurled body provides high torque and pull out performance. They should be installed using a squeezing action to avoid damaging the boss and the screw must pass through the insert to ensure maximum expansion.

**All information is given for guidance only and designers should satisfy themselves as to the suitability of the specification by requesting samples**