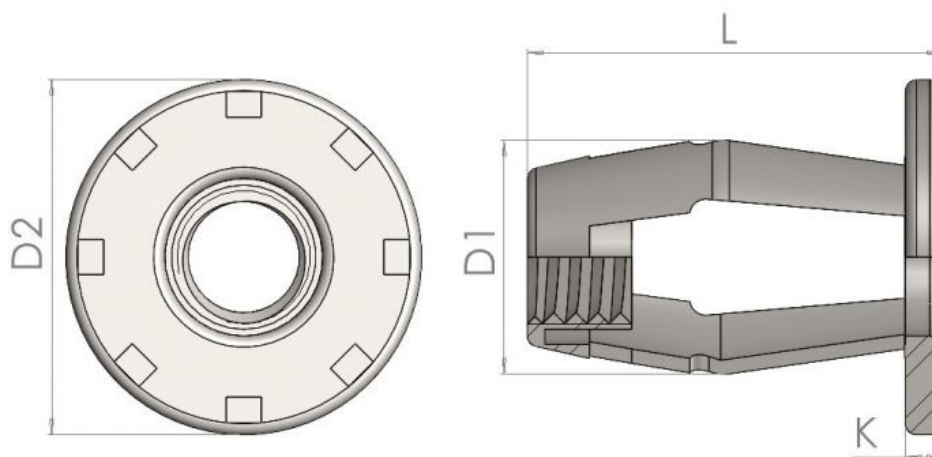




Series: 30235 Type:



## JK Nut

Part No	Thread M	Panel Range	Hole Size	D1	D2	L	K
M04SN	M4	0.5-5.0	8.0	8.0	12.0	17.0	1.60
M04LN	M4	5.0-10.0	8.0	8.0	12.0	22.0	1.60
M05SN	M5	0.5-5.0	10.0	10.0	14.0	18.0	1.60
M05LN	M5	5.0-10.0	10.0	10.0	14.0	23.0	1.60
M06SN	M6	0.5-5.0	12.0	12.0	16.0	18.0	1.60
M06LN	M6	5.0-10.0	12.0	12.0	16.0	23.0	1.60

JK Nuts provide a captive female thread in all types of thin sheet materials. The wide panel range makes them very versatile, particularly in materials where the thickness can vary such as rotational mouldings. They are crimped with an air tool or a manual tool can also be used for small volume applications.

Material and Finishes (Code):

Mild Steel, Zinc Clear Passivate (60)

**All information is given for guidance only and designers should satisfy themselves as to the suitability of the specification by requesting samples**