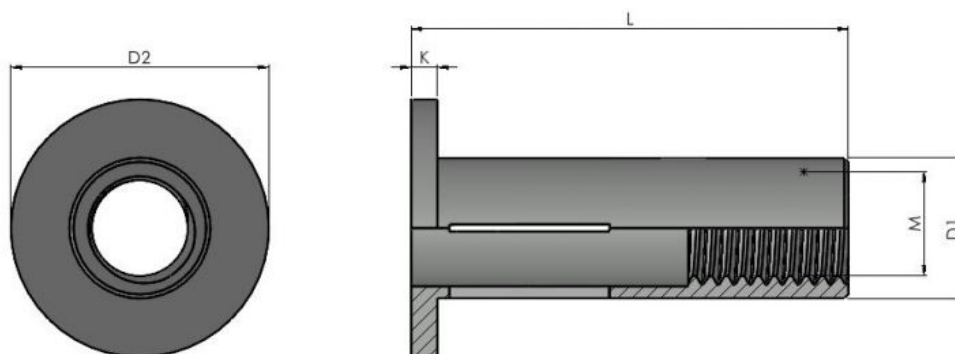




Series: 30234 Type: PN



Multi Nut

Part No	Thread M	Grip Range	Hole Size	D1	D2	K	L
PN04P3.8	M4	0.50-3.80	6.13-6.25	6.12	11.34	1.09	18.01
PN04P6.9	M4	3.80-6.85	6.13-6.25	6.12	11.34	1.09	21.16
PN05P4.5	M5	0.50-4.45	7.48-7.62	7.47	12.95	1.09	22.39
PN05P8.1	M5	4.45-8.10	7.48-7.62	7.47	12.95	1.09	25.16
PN06P7.1	M6	0.50-7.10	8.80-8.93	8.79	16.12	1.63	27.30
PN06P12.7	M6	7.10-12.70	8.80-8.93	8.79	16.12	1.63	33.22
PN08P7.1	M8	0.50-7.10	11.10-11.50	11.10	19.26	1.70	30.92
PN08P12.7	M8	7.10-12.70	11.10-11.50	11.10	19.26	1.70	36.87

Multi Nuts have a slotted body which splits when they are installed providing a larger clamp area and grip range to traditional rivet nuts. This makes them ideal for softer material like rotational mouldings, SMC and composite materials.

All information is given for guidance only and designers should satisfy themselves as to the suitability of the specification by requesting samples