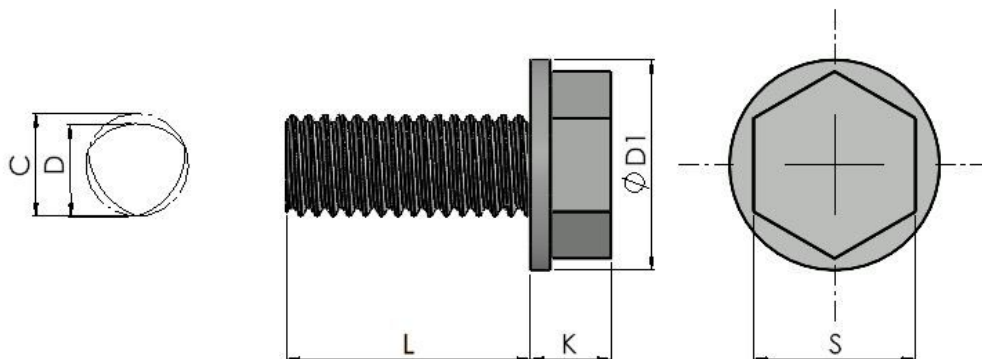




Series: 11507 Type: - DIN 7500



Tap-Tight Hex Washer Head

Part No.	Thread	D1	K	C
11507 M3**	M3	6.30	2.40	2.06
11507 M4**	M4	8.30	3.50	2.57
11507 M4**	M4	8.80	4.10	3.07
11507 M5**	M5	10.40	4.50	3.58
11507 M6**	M6	13.00	5.20	4.08
11507 M8**	M8	16.90	7.00	5.09
11507 M10**	M10	22.10	9.00	6.10

	Legend
*	Usually Available from Stock
**	Non-preferred (Possible Lead Times)
***	Special Order Only

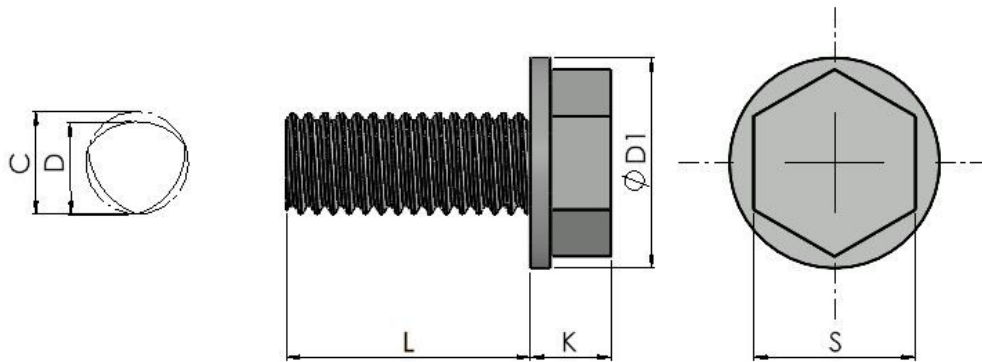
Thread / Length	5	6	7	8	10	12	16	20	25	30	35	40	45	50	55	60
M3	***	*	***	*	*	*	***	*	***	***	***	***	***	***	***	***
M4	***	***	***	***	*	*	*	*	***	***	***	***	***	***	***	***
M4-1	***	*	***	*	*	*	*	*	***	***	***	***	***	***	***	***
M5	***	***	***	*	*	*	*	*	*	*	***	***	***	***	***	***
M6	***	***	***	***	*	*	*	*	*	*	*	*	***	*	***	***
M8	***	***	***	***	***	*	*	*	*	*	*	*	***	*	***	*
M10	***	***	***	***	***	***	*	*	*	*	***	*	***	*	***	***

Thread forming screws have a trilobular thread form. These require a low level of assembly torque to initiate thread forming in sheet metal, castings and alloys. Further benefits: Screws form a female thread capable of accepting a standard metric machine screw should the need



Continued from previous page...

Series: 11507 Type: - DIN 7500



Tap-Tight Hex Washer Head

arise. The three lobed thread design allows the displaced parent material to cold flow into the relief areas of the screw thereby increasing the resistance to vibration and loosening of the screw.

Material: Steel Finish: Zinc Plated

For the part number replace ** with the desired length found in the tables below:

All information is given for guidance only and designers should satisfy themselves as to the suitability of the specification by requesting samples