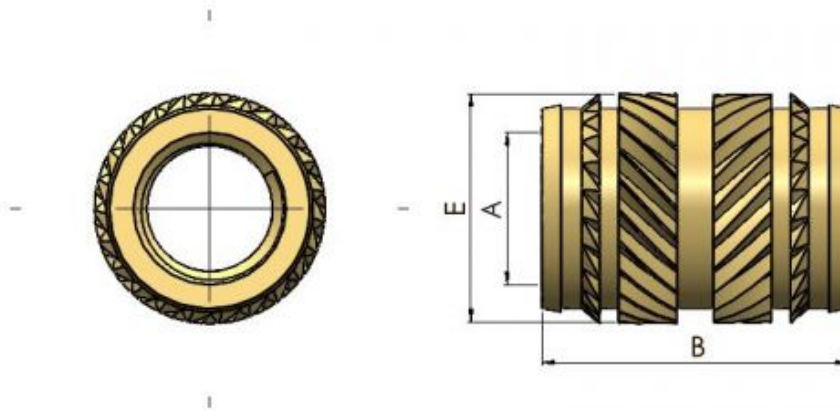




Series: 20108 Type: TC



### Heatstake / Ultrasonic Insert (symmetrical)

Part No.	Thread A	Ext. Diam. E	Length B	Hole dia. L+0.1	Min Wall W
TC020H040	M2	3.50	4.00	3.20	1.30
TC025H058	M2.5	4.40	5.70	4.00	1.60
TC030H057	M3	4.40	5.70	4.00	1.60
TC035H071	M3.5	5.40	7.20	4.80	2.20
TC040H082	M4	6.10	8.20	5.60	2.10
TC050H095	M5	6.80	9.50	6.40	2.60
TC060H127	M6	8.50	12.70	8.00	3.30
TC080H127	M8	10.00	12.70	9.60	4.50

The TC Insonic Range of inserts have the same features as the IS range but with the advantage of being symmetrical to speed up insertion for high volume applications. The unique opposing helix knurl provides exceptional resistance to torque loads and facilitates the flow of plastic into the two recessed grooves providing greater pullout loads than alternative designs. Materials and Finishes: Brass Self Colour (nickel plated on request) To Specify Use: Series No / Part No (eg 20108 HS030H057)

**All information is given for guidance only and designers should satisfy themselves as to the suitability of the specification by requesting samples**