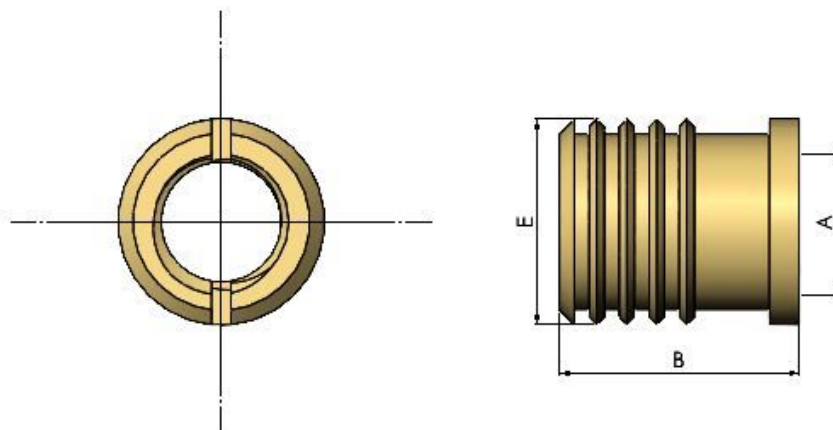




Series: 20110 Type: MV



## Expansion Type MV

Part No.	Thread A	Ext. Diam. E	Length B	No. of Vanes	Min Wall W	Hole Size L
MV020H040	M2.0	3.45	4.00	2	1.6	3.2
MV025H048	M2.5	4.30	4.80	3	2.0	4.0
MV030H048	M3.0	4.30	4.80	3	2.0	4.0
MV035H064	M3.5	5.10	6.40	3	2.4	4.8
MV040H080	M4.0	5.90	8.00	4	2.8	5.6
MV050H095	M5.0	6.70	9.50	5	3.2	6.4
MV060H127	M6.0	8.30	12.70	5	4.0	8.0
MV080H127	M8.0	9.90	12.70	5	4.8	9.5

MV inserts are a press-in expansion insert. The slotted body closes when pushed into the boss and then expands when the thread is engaged allowing it to grip the boss. All slotted inserts have a prevailing torque feature making the resistant to loosening under vibration. Material and Finish:- Brass Self Colour To Specify Use: Series No / Part No (eg 20110 MV050H095)

**All information is given for guidance only and designers should satisfy themselves as to the suitability of the specification by requesting samples**