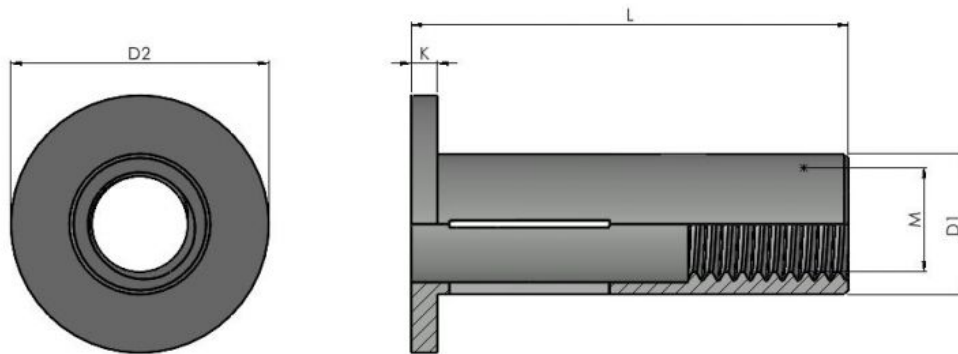




Series: 30234 Type: PN



## Multi Nut

Part No	Thread M	Grip Range	Hole Size	D1	D2	K	L
PN04P3.8	M4	0.50-3.80	6.13-6.25	6.12	11.34	1.09	18.01
PN04P6.9	M4	3.80-6.85	6.13-6.25	6.12	11.34	1.09	21.16
PN05P4.5	M5	0.50-4.45	7.48-7.62	7.47	12.95	1.09	22.39
PN05P8.1	M5	4.45-8.10	7.48-7.62	7.47	12.95	1.09	25.16
PN06P7.1	M6	0.50-7.10	8.80-8.93	8.79	16.12	1.63	27.30
PN06P12.7	M6	7.10-12.70	8.80-8.93	8.79	16.12	1.63	33.22
PN08P7.1	M8	0.50-7.10	11.10-11.50	11.10	19.26	1.70	30.92
PN08P12.7	M8	7.10-12.70	11.10-11.50	11.10	19.26	1.70	36.87

Multi Nuts have a slotted body which splits when they are installed providing a larger clamp area and grip range to traditional rivet nuts. This makes them ideal for softer material like rotational mouldings, SMC and composite materials.

**All information is given for guidance only and designers should satisfy themselves as to the suitability of the specification by requesting samples**