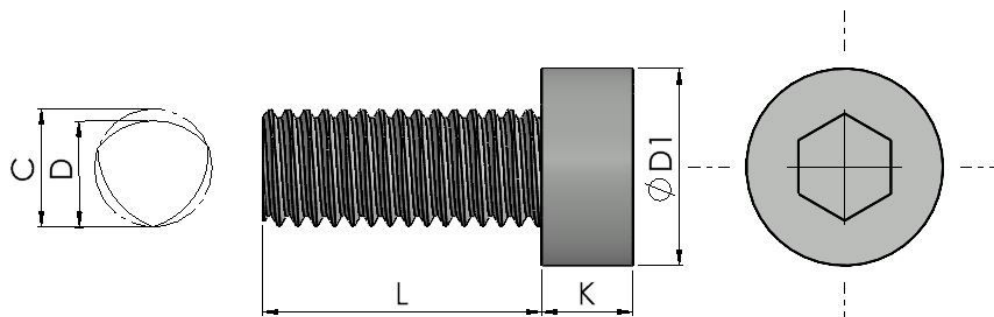




Series: 11513 Type: - DIN 7500



## Tap-Tight Hexagon Socket Cap

Part No.	Thread	D1	K	C
11513 M4**	M4	7.00	4.00	4.08
11513 M5**	M5	8.50	5.00	5.09
11513 M6**	M6	10.00	6.00	6.10
11513 M8**	M8	13.00	8.00	8.13
11513 M10**	M10	16.00	10.00	10.15

Legend	
*	Usually Available from Stock
**	Non-preferred (Possible Lead Times)
***	Special Order Only

Thread / Length	5	6	8	10	12	16	20	25	30	35	40	45	50
M4	***	***	*	*	*	*	*	*	***	***	***	***	***
M5	***	***	*	*	*	*	*	*	*	***	***	***	***
M6	***	***	***	*	*	*	*	*	*	*	*	***	***
M8	***	***	***	***	***	*	*	*	*	***	*	***	*
M10	***	***	***	***	***	***	***	***	***	***	***	***	***

Thread forming screws have a trilobular thread form. These require a low level of assembly torque to initiate thread forming in sheet metal, castings and alloys. Further benefits: Screws form a female thread capable of accepting a standard metric machine screw should the need arise. The three lobed thread design allows the displaced parent material to cold flow into the relief areas of the screw thereby increasing the resistance to vibration and loosening of the screw.

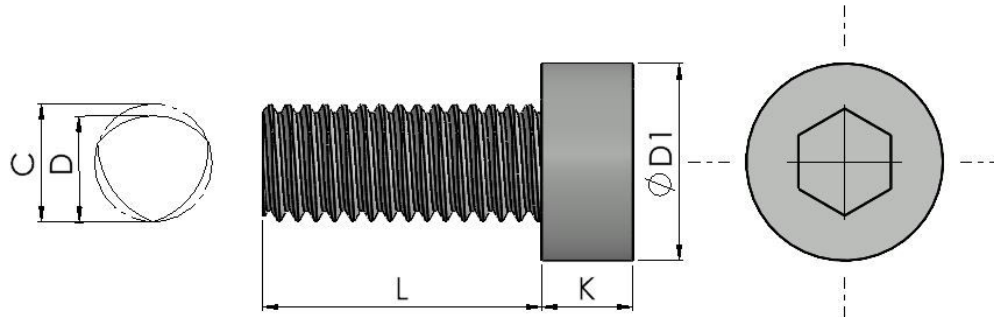
Material: Steel Finish: Zinc Plated

For the part number replace \*\* with the desired length found in the tables below:



**Continued from previous page...**

**Series: 11513 Type: - DIN 7500**



---

**All information is given for guidance only and designers should satisfy themselves as to the suitability of the specification by requesting samples**