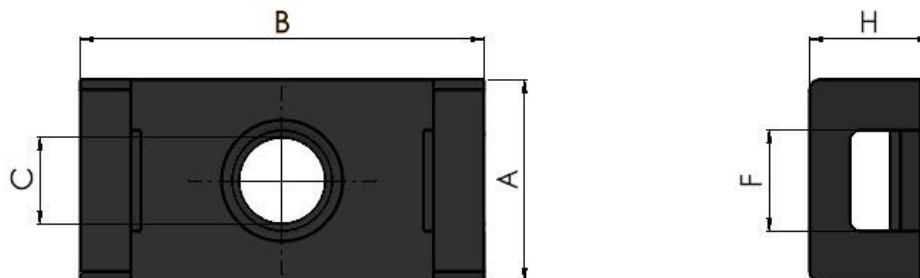




Series: 50212 Type: EYE



Cable Tie Eyelets & Cradles

Part No.	Colour	Max Tie Width	Dim. A	Dim. B	Dim. C	Dim. F	Dim. H	Adhesive/ Screw	Type
5460	NAT	4.8	10.0	20.0	4.3	5.0	6.0	SC	EYE
5461	BL	4.8	10.0	20.0	4.3	5.0	6.0	SC	EYE
5496	NAT	7.8	15.0	22.5	5.0	9.0	11.0	SC	CRA
5497	BL	7.8	15.0	22.5	5.0	9.0	11.0	SC	CRA

Cable Tie eyelets are one way tie eyelets. The screw down facility means they provide a secure location for the tie. They are used to secure cable ties and therefore cables providing a durable method of routing and securing wire bundles or pipes. The screw down feature allows repositioning of the cable run should it become necessary at a later date. Their low profile height allows use in the most confined of spaces. Cradles also offer similar features although the cables would have to be removed before repositioning. R.I.Na. Approval no.

5/206/85. Material & Colour:-Nylon 66 Natural & Black To Specify Use: Series No / Part No (eg 50212 5497)

All information is given for guidance only and designers should satisfy themselves as to the suitability of the specification by requesting samples