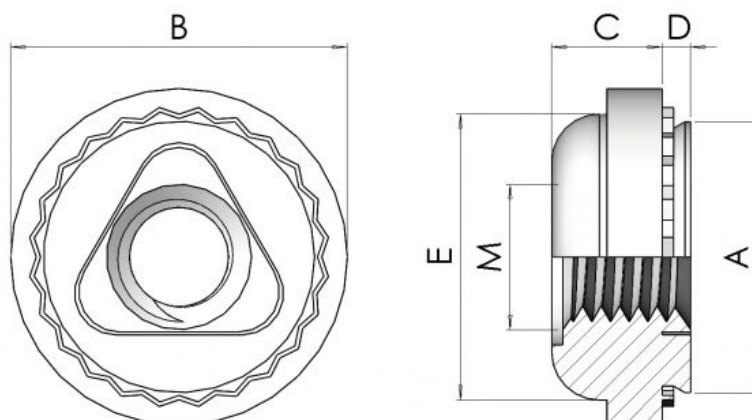




Series: 30307 Type: FL



Self Clinch Floating Nuts

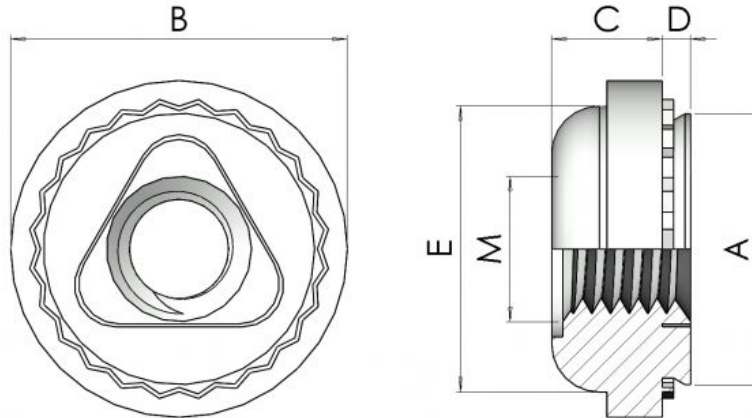
Part No.	Thread M	Min. Sheet	Body Diam B	Body Depth C	Lead Diam. A	Shell Diam. E	Shank Length D	Hole Size P	Min dim. X
M3FL-1	M3	1.0	9.1	3.3	7.34	7.4	0.97	7.4	8.6
M3FL-2	M3	1.4	9.1	3.3	7.34	7.4	1.37	7.4	8.6
M4FL-1	M4	1.0	11.2	3.3	9.32	9.3	0.97	9.4	9.7
M4FL-2	M4	1.4	11.2	3.3	9.32	9.3	1.37	9.4	9.7
M5FL-1	M5	1.0	11.9	4.4	10.29	10.3	0.97	10.3	11.0
M5FL-2	M5	1.4	11.9	4.4	10.29	10.3	1.37	10.3	11.0
M6FL-2	M6	1.4	15.3	5.3	13.06	13.0	1.37	13.1	14.0
M3FLL-1	M3 Loc	1.0	9.1	4.8	7.34	7.4	0.97	7.4	8.6
M3FLL-2	M3 Loc	1.4	9.1	4.8	7.34	7.4	1.37	7.4	8.6
M4FLL-1	M4 Loc	1.0	11.2	5.3	9.32	9.3	0.97	9.4	9.7
M4FLL-2	M4 Loc	1.4	11.2	5.3	9.32	9.3	1.37	9.4	9.7
M5FLL-1	M5 Loc	1.0	11.9	6.9	10.29	10.3	0.97	10.3	11.0
M5FLL-2	M5 Loc	1.4	11.9	6.9	10.29	10.3	1.37	10.3	11.0
M6FLL-2	M6 Loc	1.4	15.3	7.9	13.06	13.0	1.37	13.1	14.0

Floating Clinch Nuts are a very useful fastener for reducing the problems caused in assembly of pre-fabricated boxes where tolerance build up or inaccuracies due to bends occur. Whilst the outer shell of the fastener is captive in the sheet there is a separate inner nut which moves within the outer shell without rotating. This allows a small amount of movement to allow for misalignment. Thread locking versions are also available. These products are suitable for use in materials of Rockwell Hardness of B - 70 or less. Materials & Finishes:-Steel Trivalent Zinc (code 60)303 Stainless Steel Self Colour (Code SS)To specify use Series No/Part No/Finish Code (eg 30307 M4FL-1 60)Thread locking version also available (Code FLL)



Continued from previous page...

Series: 30307 Type: FL



All information is given for guidance only and designers should satisfy themselves as to the suitability of the specification by requesting samples