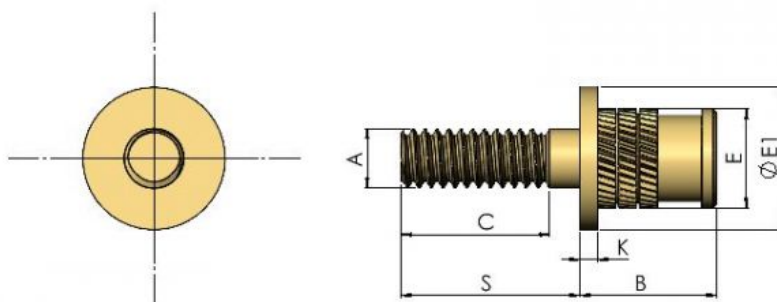




Series: 20104 Type: HPS



Press In Headed Stud for Thermoset

| Part No. | Thread A | Ext. Diam. E | Head dia. E1 | Head thckn K | Length B | Stud length S | Hole Diam L | Min wall W |
|----------|----------|--------------|--------------|--------------|----------|---------------|-------------|------------|
| HPS020L_ | M2.0 | 3.35 | 4.80 | 0.60 | 4.60 | 6-16 | 3.1 | 1.6 |
| HPS025L_ | M2.5 | 4.20 | 5.60 | 0.60 | 5.90 | 6-16 | 3.8 | 2.0 |
| HPS030L_ | M3.0 | 4.20 | 5.60 | 0.60 | 5.90 | 6-16 | 3.8 | 2.0 |
| HPS035L_ | M3.5 | 5.00 | 6.40 | 0.80 | 7.10 | 6-25 | 4.6 | 2.5 |
| HPS040L_ | M4.0 | 5.80 | 7.20 | 0.80 | 8.20 | 6-25 | 5.4 | 2.5 |
| HPS050L_ | M5.0 | 6.60 | 8.00 | 1.00 | 9.30 | 6-25 | 6.2 | 2.5 |
| HPS060L_ | M6.0 | 8.20 | 9.50 | 1.30 | 10.50 | 6-25 | 7.8 | 2.8 |
| HPS080L_ | M8.0 | 9.70 | 11.00 | 1.30 | 10.50 | 10-25 | 9.3 | 3.8 |

The HPS Pressin have the same features as the HPI range but with a male thread. These inserts are designed to provide permanent, strong, thread forms in Thermoset and other hard plastics. The three bands of sharp helical knurling ensure the insert broaches its way into the plastic whilst the debris packs the relief to ensure the insert locks in place providing high resistance to torque loads and adequate resistance to pull out loads in these plastics. Material and Finish:- Brass Self Colour To Specify Use: Series No / Part No / Length (eg 20104 HPS030HL12 M3x12)

All information is given for guidance only and designers should satisfy themselves as to the suitability of the specification by requesting samples